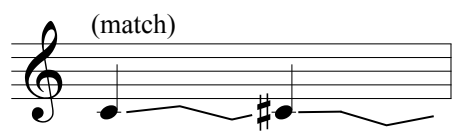


NOVEMBER SKY

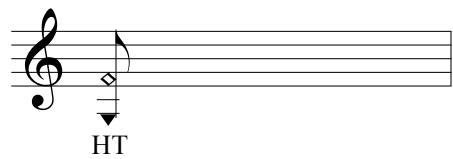
for flutist, doubling piccolo, alto and bass flutes with 4 channel sound projection

David Felder

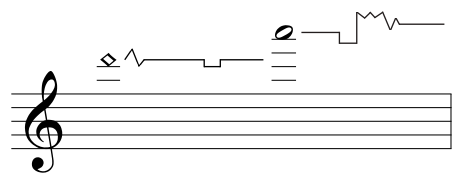
Symbols and Notes



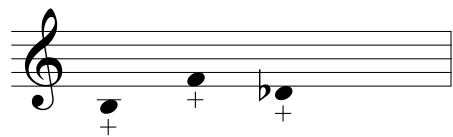
Match computer pitch: raise and lower pitch slightly with embouchure to match changing pitch of electronics



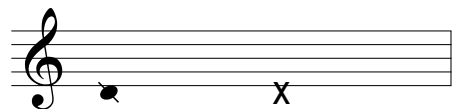
"Hut" tones: violently close hole of mouthpiece with tongue; sounding pitch indicated (sounds approx. m7 below fingered pitch)



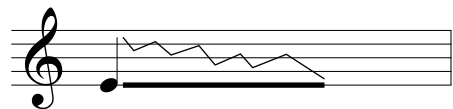
Harmonics/Whistle Tones: trace contour of lines through harmonic spectrum (left) or whistle tone (right) spectrum



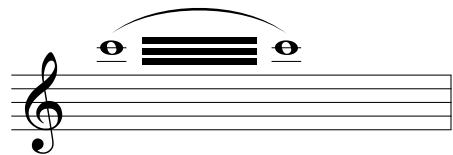
Key Clicks: key clicks throughout the piece are pitched



Air Sounds: produce a tone that is mostly breath sound (left) or all breath sound (right)



Overblown Attack: hugely overblown, breathy attack



Color trill: quickly alternate between two different fingerings of the same pitch

The performer must become completely familiar with each of the computer cues. The live part "fits" with the electronics and so near-synchrony is very important. It is recommended that the flutist practice with a CD (or other portable media) of the cues so that within each section close coordination becomes ingrained as the cues are learned. The CD is available through the composer or by creating a file from the stereo mix version.

In movements 3 and 4, the tempo is suspended and time is shown in elapsed seconds below the computer staff.

Piccolo, alto and bass flutes appear at transposed pitch.

A stereo recording of the work is commercially available on Bridge #9049, *The Music of David Felder*.

Duration: ~17'

for Rachel Rudich
NOVEMBER SKY
I.

David Felder
1991-92

Cue 1

♩ = 60 Violent, painful

Piccolo

Computer [Tape]

dramatic

mechanistic

ff *fff*

8va --->

Musical score for Piccolo and Computer [Tape]. The Piccolo part is in 8/8 time, starting with a dramatic trill (ff) and a mechanistic section (fff). The Computer [Tape] part consists of two staves, with the top staff featuring a trill (ff) and the bottom staff featuring a trill (ff). The score includes various musical notations such as trills, triplets, and dynamic markings.

5

trill R2

full / lyric

(lipped, then R,4,3 2)

fp *ff* *f*

più mf poco a poco cresc.

(8) --->

8va

Musical score for Piccolo and Computer [Tape]. The Piccolo part continues with a trill (ff) and a full/lyric section (f). The Computer [Tape] part features a trill (fp) and a full/lyric section (f). The score includes various musical notations such as trills, triplets, and dynamic markings.

10

mechanistic

f *ffp* *ff* *fff*

8va --->

(8) --->

Musical score for Piccolo and Computer [Tape]. The Piccolo part continues with a mechanistic section (f). The Computer [Tape] part features a trill (ffp) and a full/lyric section (f). The score includes various musical notations such as trills, triplets, and dynamic markings.

13

mp

(8) --->

(8) --->

Musical score for Piccolo and Computer [Tape]. The Piccolo part continues with a mechanistic section (f). The Computer [Tape] part features a trill (ffp) and a full/lyric section (f). The score includes various musical notations such as trills, triplets, and dynamic markings.

16 *tr* *breathy* *obsessive*

mp *mf* *f* *mp* *p* *mf* *p* *mp* *f*

(8) *8va* *loco* *8va*

21 *ff* *f*

(8) *8va*

24 *tr* *tr* *tr* *3X* each timer faster, more explosive, more violent ... *(3rd time only)* *fff* (poss.)

(8) *8va*

Start tape after third repeat.
attacca

II.

Cue 2

♩ = 120 Attack!

Piccolo

Computer [Tape]

27

ff *mf* *f* *mf* *f* *ff* *ffmp*

8va.....

33

ff *f* *ff* *ffp* *ff* *f* *ff*

5:4

39

lyric

f *mf* *f* *mf* *f* *fff* *ff* *f poco a poco cresc.*

45

lyric

fff *f* *ff*

dramatic

50

ff mp < f

mp poco a poco cresc.



57

mp

mp f mf mf



63

mf f mp p ppp

breathy --- fl. noise

to Flute

♩ = 144

69

75

81

86

92

f > *mf* *ff* *mf* *f* *mp* *f* *cresc.*

lyric

98

hyper-dramatic *sim.*

ff (poss.) *cresc. poco a poco* *fff*

tr

104

fff *fff* *mp*

8va

110

ff *fff* *f* *ff* *f* *mf* *f* *freely*

8ba

3.

Cue 3a

(match computer pitch)

0 20

In movements 3 and 4, the tempo is suspended and time is shown in elapsed seconds below the computer staff.



120

20 40



$\text{♩} = 90$
soloistic; free, forceful

40 60

(reflective, slower)

lyric - (hold back . . .)

wait

violent release!!

60 80

Cue 3b

Begin to transform energy to submerge into computer

senza misura: CALMO

(match)

80 100

[whistle tones, or harmonics]
neutral, non espr.

sim.

100 120

* "hut" tones; sounding pitch indicated - fingered pitch is *approx.* minor 7th higher in each case.

** rev Δ approximates a reverse envelope with a violent clipped tongue slap that ends the sound event.

norm. espr.

(bend)

HT
mf

120 140

musical score system 140-160

140

160

* all key clicks in Nov. Sky are pitched.



musical score system 160-180

160

180



musical score system 180-200

180

200

to alto flute!

$\text{♩} = 120$ lyrical, fat somewhat freely

f *f* *mf* poco a poco cresc.

200 220



senza misura

norm → breathy norm

sim. *f* poco a poco cresc. *p* *mfpp* *mf* *pp* *ppp* (bend)

220 240



(Progressive trem. w. flutter)

sl. w. vibr. ghostly half breath mostly breath

a tempo norm., lyrical, espr. intense!

mp *f* *p* *mp* *mfpp* *ppp* *f* *mf* *pp* *mf* *f* *fmp* *f*

HT (gl.)

240 260



med. sl. w. vibr.

pale norm pale breathy

ppp *pp* gliss *p* *pp*

HT

260 280

sl. w. vibr.

slowly remove fl.

ppp — pp — ppp

pp — ppp — p

N

280 300



300 320



320 340



ghostly

espr.

slow vibr.

pale and breathy

add flutter imperceptibly

to bass flute!

wait for next cue

ppp (poss.)

pp — p

> pp

p

half breath

all breath

N

340 360

Cue 4

4.

hugely overblown attack

ff *p* *f*

p *f* *mp* *f* *mf*

* slowing; irreg.

lyric, espr.

mf *cresc.*

slow, wide vibr.

p

* "color" fingerings

norm. / espr.

mostly air → prog. add fl. → add vibr. → mostly air

mf *p* *mf* *pp*

(lyric)

• = 48~60

fast - slow vibr.

mf *p* *mp* *p*

smooth decel

fp *mf* *f* *p* *mf* *mp* *p*

3 3 7 3

(lyric) espr. "noh"-like slow vibr.

mp *f* *p* *mf* *f* *mp* *mf* *f* *p* *mf* *pp*

60 80

breathy, overblown quality:
use "f" smorzando as breath articulator

p *f* *p* *f* *p* *pp* *f* *p* *mf* *poco a poco dim.* *ppp* *p* *cresc.*

♩ = 60 (lyric)

80 100

♩ = 52 (distant, plaintive; but freely)

mf *p* *pp* *p* *pp* *p* *mf*

100 120

♩ = 64~72 (more urgent) *rit.* (slightly faster) *hugely overblown breath attack* *♩* = 48~60 (lyric)

p *mf* *f* *mf* *f* *p* *f* *p* *mf*

120 140

* 2 different fingerings

140

160

piu mf *pp* *mp* *f* *p* *f* *mf* *mp* *f* *cresc.*

* "color" fingerings

160

180

irreg. color fingerings *fat, overblown breath attack* *sim.* *lyrically; accel*

ff *p* *f* *p* *ff* *mp* *mf* *f* *mf* (poco dim.)

180

200

hold back *pp* *HT* *legatiss.* *f* *fp* *mp* *pp*

200

220

8 *lyric* *cresc.* *mp* *mercurial* *5* *13* *p* *mp* *p* *f* *breath only - "p"* *HT* *pp* *mf*

• = 52~60 lyric

pp *cresc.*

mp *mf*

mp

legatiss. (alter. "color" fingerings)

220 240

* 2 different fingerings

sim. (sl., even accel.)

alternate slow, wide vibr. with fast "noh" vibr.

mp *mp* *f* *p < f* *p > pp* *mp* *ppp* *mf*

HTs

240 260

all breath

mostly air grad. add fl.

p *pp* *ppp* *p* *mp* *mf* *ppp* *p* *ppp*

fl. ends. slow, widening vibr. starts (smorz. breath)

increasingly breathy

260 280

musical score snippet (measures 280-300). The notation includes a treble clef staff with a melodic line and a grand staff (treble and bass clefs) with a piano accompaniment. The score is marked with dynamics: *ppp* (pianissimo), *p* (piano), *mf* (mezzo-forte), *f* (forte), and *mp* (mezzo-piano). Performance instructions include "murmuring; legatiss." and "poco a poco cresc. (follow computer cue)". Measure numbers 280 and 300 are indicated at the bottom.



musical score snippet (measures 300-320). The notation includes a treble clef staff with a melodic line and a grand staff (treble and bass clefs) with a piano accompaniment. The score is marked with dynamics: *ppp* (pianissimo), *mf* (mezzo-forte), *pp* (pianissimo), *mf* (mezzo-forte), and *p* (piano). Performance instructions include "pale lyric" and "HTs". Measure numbers 300 and 320 are indicated at the bottom.